



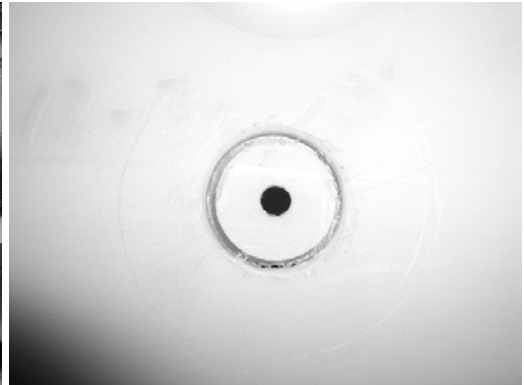
**SEN-06-2**  
**Fuel sender instructions for**  
**2004-2006 Yamaha Rhino**

**INSTALLATION:**

***NOTE: To avoid risk of fire, it is recommended to first fully drain the fuel from the tank. Rinse any remaining fuel out of the tank and allow tank to dry before beginning installation.***

Please read all the instructions before beginning installation.

1. Measure and mark the center for the hole about 2-1/2" from the center of the raised boss in the fuel tank. This is to locate the sensor so it will sit flat on the tank and will seal. If too close to the edge, the radius of the tank will prevent the sensor from sealing, or if too close to the center, the same issue.
2. Using a 1" hole saw, begin drilling a hole at the marked location. DO NOT drill all the way through the tank as this will allow cuttings to drop into the fuel tank. Drill slowly and check progress, blowing away the cuttings with compressed air until the hole saw is close to breaking through the tank.

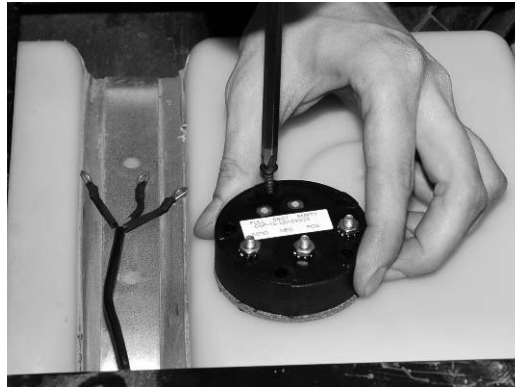


3. Insert an Allen wrench or screwdriver into the pilot hole from the hole saw to prevent the plug from falling into the tank. Then cut the rest of the way through the tank with a utility blade and remove the plug from the tank.



4. Apply fuel resistant sealant to the cork gasket and place gasket on the sensor. The holes of the gasket will only line up with the holes in the sensor in one position so be sure to line up ALL the holes in the gasket with the holes in the sensor.

5. Insert the sensor into the tank through the drilled hole. Using the provided screws, fasten the sensor to the tank. The screws will form their own threads into the plastic. Don't over tighten the screws as this could cause the screws to tear out of the plastic.



6. Connect the included wiring harness ring terminals to the sender terminals using the following connections:
  - a. RED wire to the POS terminal
  - b. BLACK wire to the NEG terminal
  - c. GREEN wire to the SEND terminalNOTE: if the harness is not plugged directly into a gauge, the red wire must be connected to key switched +12V, the black wire must be connected to ground, and the green wire will be the sender connection for the gauge.
7. Route the wiring harness and connect to gauge as described in the gauge instructions.

#### CALIBRATION:

The setting screws on the sender should be factory set to approximately the correct location and shouldn't need adjustment. The correct sender will need to be selected in the Dakota Digital gauge.

For the UTV-1000 series gauges, select the DakDig sender option.

For other Dakota Digital gauges, use the Stewart Warner sender (240 ohm empty 33 ohm full) setting.

#### **SERVICE AND REPAIR**

DAKOTA DIGITAL offers complete service and repair of its product line. In addition, technical consultation is available to help you work through any questions or problems you may be having installing one of our products. Please read through the Troubleshooting Guide. There, you will find the solution to most problems. **Should you ever need to send the unit back for repairs, please call our technical support line, (605) 332-6513, to request a Return Merchandise Authorization number.** Package the product in a good quality box along with plenty of packing material. Ship the product by UPS or insured Parcel Post. Be sure to include the RMA number on the package, and include a complete description of the problem with RMA number, your full name and address (street address preferred), and a telephone number where you can be reached during the day. Any returns for warranty work must include a copy of the dated sales receipt from your place of purchase. Send no money. We will bill you after repair.

#### **Dakota Digital 24 Month Warranty**

DAKOTA DIGITAL warrants to the ORIGINAL PURCHASER of this product that should it, under normal use and condition, be proven defective in material or workmanship within 24 MONTHS FROM THE DATE OF PURCHASE, such defect(s) will be repaired or replaced at Dakota Digital's option.

This warranty does not cover nor extend to damage to the vehicle's systems, and does not cover removal or reinstallation of the product. This Warranty does not apply to any product or part thereof which in the opinion of the Company has been damaged through alteration, improper installation, mishandling, misuse, neglect, or accident.

This Warranty is in lieu of all other expressed warranties or liabilities. Any implied warranties, including any implied warranty of merchantability, shall be limited to the duration of this written warranty. Any action for breach of any warranty hereunder, including any implied warranty of merchantability, must be brought within a period of 24 months from date of original purchase. No person or representative is authorized to assume, for Dakota Digital, any liability other than expressed herein in connection with the sale of this product.

## **Dakota Digital**

4510 W. 61ST St. N., Sioux Falls, SD 57107  
Phone: (605) 332-6513 FAX: (605) 339-4106

[www.dakotadigital.com](http://www.dakotadigital.com)

[dakotasupport@dakotadigital.com](mailto:dakotasupport@dakotadigital.com)

©Copyright 2008 Dakota Digital Inc.